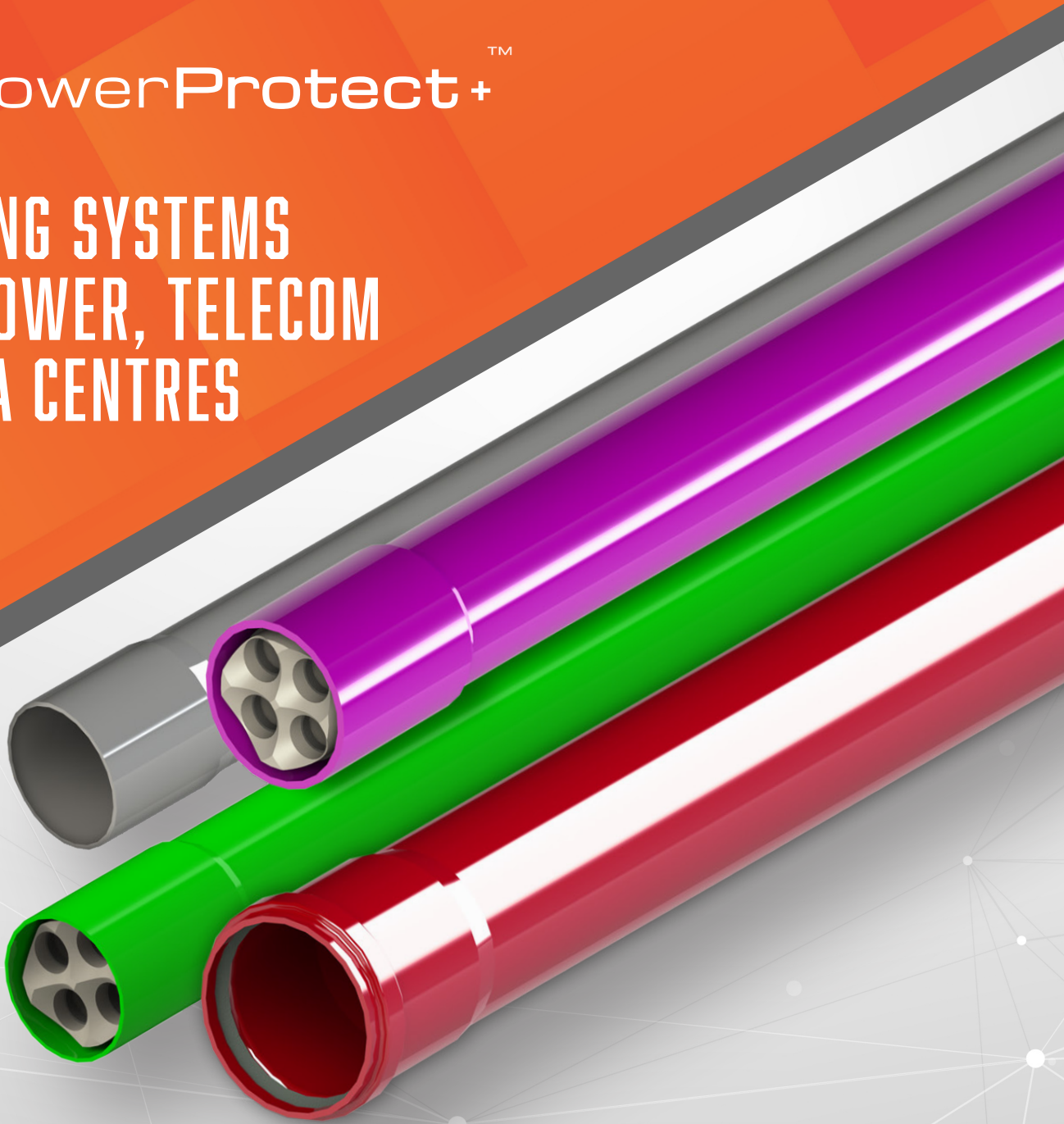




DUCTING SYSTEMS FOR POWER, TELECOM & DATA CENTRES



Duct Systems manufactured to Industry Standard BSEN 61386

Full accessory range available to compliment duct systems

Range of uPVC duct sizes available 38-250mm

Emtelle is a market leading producer of Telecommunication and Power Duct systems.

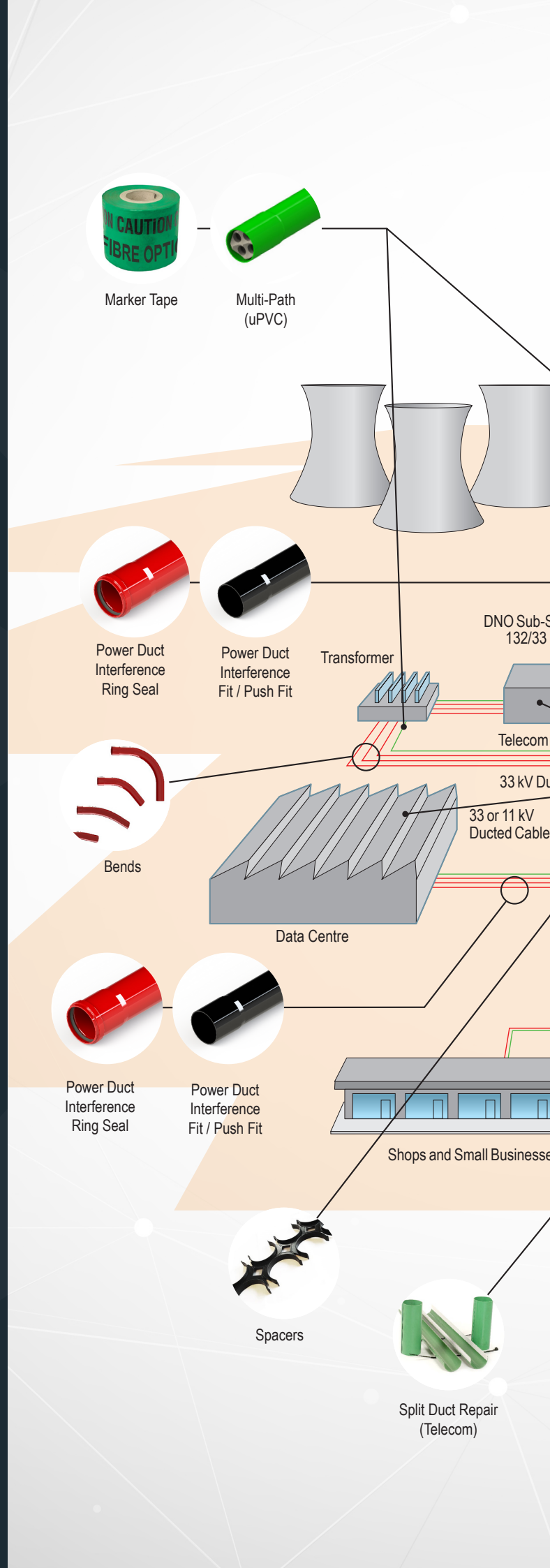
Emtelle has continued to be the leading innovator in these fields since extrusion started at our factory in Jedburgh (uPVD & Multi-Path) in 1980 and is complimented by the PE manufacturing facilities located at Hawick, Scotland and Sønder Felding, Denmark.

Our duct systems include a comprehensive range of accessories and ancillary items such as bends, connectors, spacers, access chambers and building entry accessories and seals. We take pride in offering our customers a complete end to end duct solutions from a single reputable source.

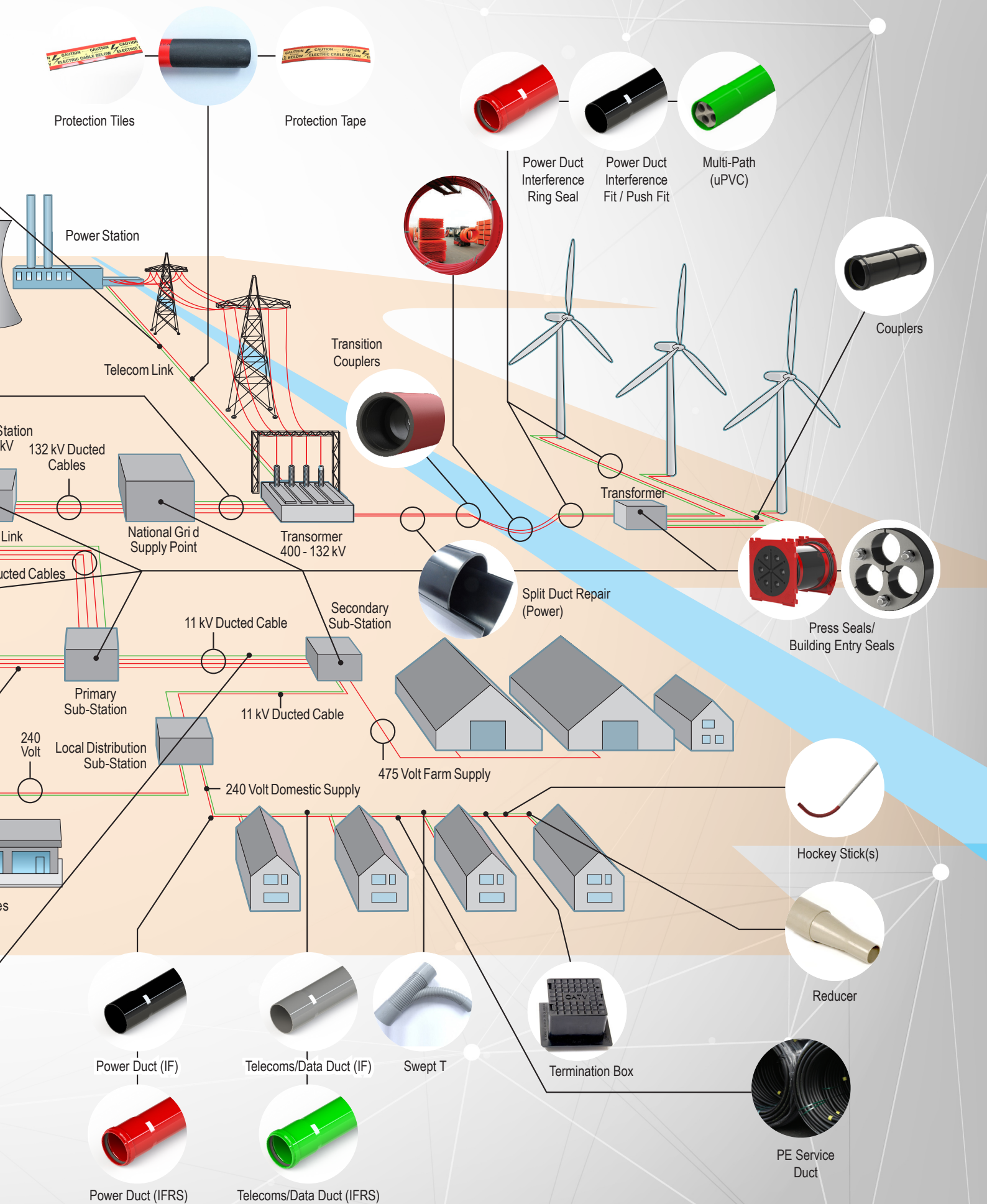
In addition to Power and Telecommunications systems, Emtelle produce a range of products used across a number of sectors. From datacentres, motorway communications, offshore connections and drainage.

PVC requires up to 50% less fossil fuel to manufacture when compared with equivalent/alternative plastic duct materials (such as PE). From an environmental perspective, fossil fuel depletion is a long-term concern as it is a non-renewable resource. PVC requires salt (chlorine from sodium chloride) which is a hugely abundant natural resource with tens of thousands of years' worth of resources available.

In addition, PVC products can be manufactured from recycled material. Any scrap material produced in the manufacture of PVC duct can also be re-ground and re-used.



Conductive Power Duct (uPVC)



TELECOMS & DATA DUCT



Interference Fit / Push Fit (IF)

- A push fit socket design which can be assembled by hand.
- Create an IP4X rated connection. Prevents the ingress of fines greater than 1 mm.
- Manufactured to meet BSEN 63186. (450N Compression Strength at 23deg)



Interference Ring Seal (IFRS)

- A tapered socket design with the addition of a ring seal.
- Create an IP 57 rated connection. Prevents the ingress of dirt and water. Available in sizes 50, 110, 125, 180, 200 & 250mm.
- Manufactured to meet BSEN 63186. (450N Compression Strength at 23deg)
- Also available in 1500N version for shallow burial.



Multi-Path (uPVC)

- 110mm Primary duct with 4 inner subducts.
- Sockets fitted with integrated IP57 coupling body. Prevents the ingress of dirt and water to both the main duct and the inner sub ducts.
- Manufactured to meet BSEN 63186. (450N Compression Strength at 23deg)
- Also available in 1500N version for shallow burial.

Range of uPVC duct sizes available: 38 - 250mm

ACCESSORIES (TELECOM)



Split Duct Repair (Telecom)

- Use to repair damaged sections of telecoms duct.
- Size range of 96.5mm and 110mm
- Tongue and groove split design sections
- Available in Green, White, Grey & Orange



Swept T

- Used to take domestic supply from main duct run
- Steps down 96.5/110mm to 53.9mm
- Smooth sweeping exit



Access Chambers]

- Preformed access chambers - quick installation
- No need for concrete backfill
- Meets requirements of BS EN124



Reducers

- Step down 95.5mm duct to 53.9mm
- Provides a smooth transition for the cable
- Available in Green & Grey



Marker Tape

- Used to mark to location of buried fibre
- Alert utility services of the location of buried fibre duct.
- Shows free Emergency Contact Details



Termination Box

- Manufactured from Polypropylene - withstand hot rolled asphalt.
- Used for terminating tele communications cable
- Lid with hinge for easy access.

POWER DUCT



Interference Fit / Push Fit (IF)

- A push fit socket design which can be assembled by hand.
- Create an IP4X rated connection. Prevents the ingress of fines greater than 1 mm.
- Manufactured to meet industry standards: ENATS-12-24 Class 1/Class 2. (450N Compression Strength at 50/75deg).



Interference Ring Seal (IFRS)

- A tapered socket design with the addition of a ring seal.
- Create an IP57 rated connection. Prevents the ingress of dirt and water. Available in sizes 50, 110, 125, 180, 200 & 250mm.
- Manufactured to meet industry standards: ENATS-12-24 Class 1/Class 2. (450N Compression Strength at 50/75deg)
- Also available in 1500N version for shallow burial.

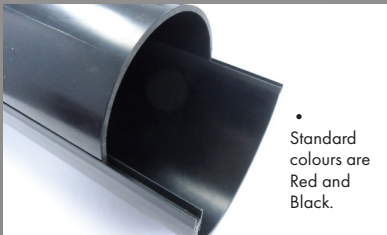


Conductive Duct (uPVC)

- Electro-conductive spigot coating enables the isolation of cable faults within the duct system.
- Available with Interference (Push) Fit Socket or an Interference Ring Seal Socket. (IF or IFRS)
- Duct manufactured to meet industry standards: ENATS 12-24 Class 1 Compression Strength. (450N Compression Strength at 75deg).

Range of uPVC duct sizes available: 38 - 250mm

ACCESSORIES (POWER)



- Standard colours are Red and Black.

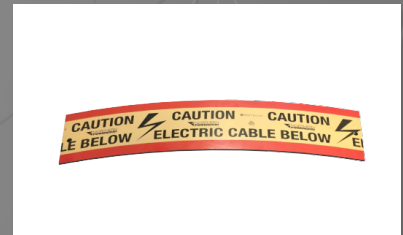
Split Duct Repair (Power)

- Repair damaged uPVC Power duct systems with cables already installed in the system.
- Size range is 110mm to 250mm OD
- Split duct kit includes: 2 x 3m uPVC split halves, with H strips and 3 x nylon cable straps.
- Split coupler kit includes 2 x split couplers & 4 nylon cable straps.



Warning Tape

- Placed in trench above buried duct networks.
- Designed to provide a visual warning that power cables are present if digging takes place.
- Fully compliant with ENA-TS-12-23
- Available with DNO specific print details and warnings.



Protection Tape

- Designed to provide a protective layer for underground ducted networks.
- Fully compliant with ENA-TS-12-23
- Manufactured from recycled PE compound
- Available with DNO specific print details & warnings.
- Supplied on rolls



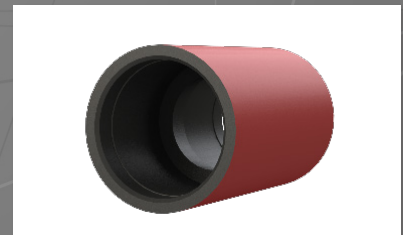
Protection Tiles

- A heavy-duty protective board, designed to provide a protective layer for underground ducted networks.
- Fully complies with ENA-TS-12-23 available in Class 1 or Class 2 specification.
- Manufactured from recycled PE compound.
- Available with DNO specific print details & warnings.
- Lateral movement prevented by inserting pegs within the holes at either end.



Hockey Stick(s)

- Duct bend used to connect electric meters with underground services.
- 2 - piece product with a coloured 90deg bend attached.
- Provides extra mechanical protection for electrical cable.



Transition Couplers

- Provide a means to connect the plain ends of two ducts with different diameters.
- Designed to provide a smooth internal transition between joining ducts.
- Manufactured from a solid wall HDPE pipe.
- Both ends contain a ring seal – air tight/sealed connection.
- Black as standard. Red available.

ACCESSORIES (SHARED)



Couplers

- Connector Sleeves (IP4X)
- Ring Seal STOP couplers (IP57)
- Ring Seal SLIP couplers (IP57)
- Expansion couplers
- Transition couplers
- Conductive couplers



Bends

- Available with IF or IFRS sockets.
- 11.25, 22.5, 45 & 90deg available as standard.
- 3.9m Radius available to suit HV cable bending radius
- 1.2m Radius available to suit LV cable bending radius.
- Bespoke bends are available on request.



Brushes

- Used to clean the duct ID prior to duct proving.
- Alternative cleaning product to the foam pigs.



Mandrels

- Used for duct proving prior to installing cable.
- Typically <10% of duct ID
- Towing eyes pre-installed



Foam Pigs

- Used to clean/dry the inside of a duct prior to pulling through cable.
- Available with rope pre-installed for pulling
- Also available in medium density – suitable for blowing (Maintains shape under compressor pressure)
- Typically followed by a mandrel to prove the duct.



Expanding Plugs

- Prevents the ingress of debris and water after duct installation.
- Cap can be removed to allow access to threaded shaft to accept rope blowing gun.
- Available to suit all sizes of Emtelle duct.
- Heavy duct steel and rubber construction.



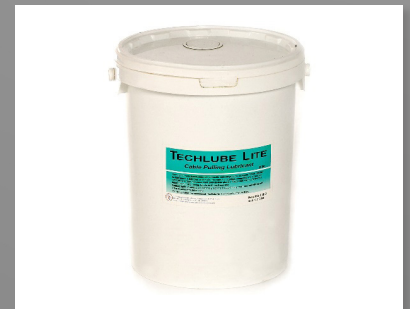
End Caps

- Prevents the ingress of debris and water prior to duct installation.
- Available in bags or pre-installed on duct.
- Easy to install interference fitment



Press Seals / Building Entry Seals

- Used to seal cable within duct
- Suitable for building entry applications
- Gas and watertight sealing solution available in a range of sizes to suit Emtelle duct
- Expanding design to ensure a secure fit
- Bespoke configurations available to suit a wide range of cable diameters and quantities.
- High quality 304 stainless steel and EDPM rubber.



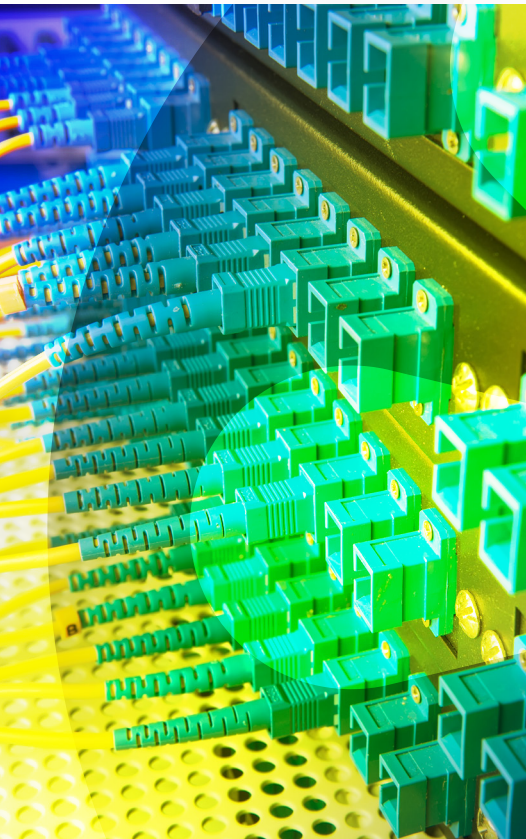
Cable Lubricant

- Use to repair damaged sections of telecoms duct.
- Size range of 96.5mm and 110mm
- Tongue and groove split design sections
- Available in Green, White, Grey & Orange



Spacers

- Organise multiple ducts in a trench
- Ensures uniform installation
- Unique click designs, extra sections can easily be added.





CONTACT US

Emtelle Head Office

Haughhead
Hawick
TD9 8LF
United Kingdom

 +44 (0) 1450 364 000
 info@emtelle.com

Emtelle Scandinavia

Vardevej 140
7280 Sønder Felding
Denmark

 +45 86 28 84 88
 salg@emtelle.com

Emtelle GmbH

An der Flurscheide 20
99098 Erfurt
Germany

 +49 (0) 361 654 330
 info-de@emtelle.com

Emtelle Asia Pacific

No. 4, Jalan PJU 1A/8
Ara Damansara
47301 Petaling Jaya
Selangor, Malaysia

 +60 (0)3 7845 4406
 info-my@emtelle.com



WWW.EMTELLE.COM